

CONSOLE CONNECTOR KIT 8001 INSTALLATION INSTRUCTIONS

FOR USE WITH: LESLIE Speaker Models 122, 122V, 122RV, 142, 222, 222RV
HAMMOND Models B2, B3

KIT CONTENTS

Console Connector Assembly	047357	Tremolo Control	
Console Connector Extension	047365	brown	015594
Cable Assembly, 6-conductor, 30-foot	017277	ebony	015602
Installation Instructions	047472	ivory	015610
Oiler	053025	Screw, sheet metal, 8 x 1/2	
Wire Nut (2)	028076	Phillips head (2)	029132
Screw, wood, 6 x 1/2, Phillips head (2)	029124	Screw, sheet metal, 8 x 1/2	
		Phillips head,	
		bronze (2)	042408
		Staple, insulated (4)	028464

CAUTION:

Due to the presence of electrical potential and the danger of moving mechanical parts, installation procedures or adjustments requiring work inside the LESLIE speaker cabinet or the organ console should be performed **ONLY BY** a service man authorized by the dealer or factory to perform such work.

INSTALLATION

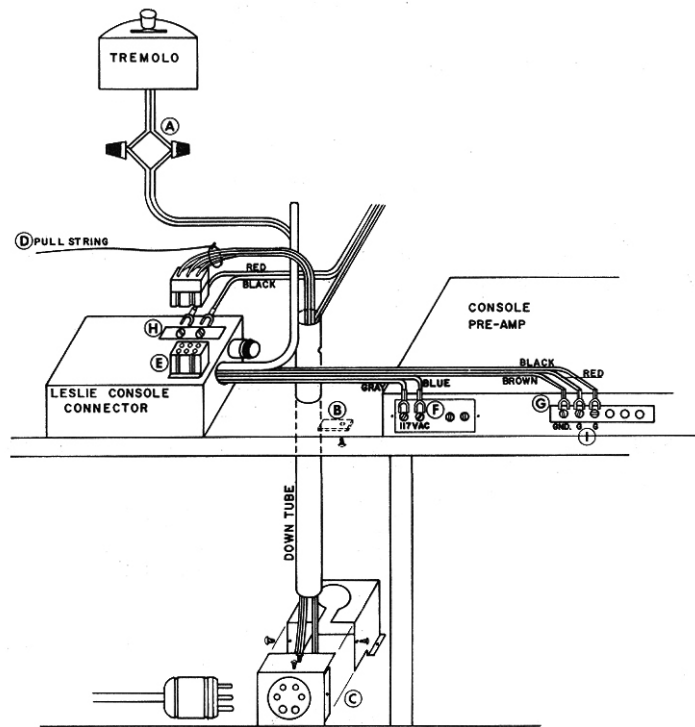


Figure 1.
Console Connector Kit Installation

CAUTION: DISCONNECT ORGAN POWER BEFORE PROCEEDING!

NOTE: Disregard the shielded cable containing an ORANGE, BLUE, BROWN, and YELLOW wire which protrudes from the console connector. It is not used in this application.

1. Mount the tremolo control switch on the wooden rail in front of the lower manual. Use the black oxide screws provided in the hardware kit.

2. Route the control cord under the lower manual, through the keyboard shelf, and into the amplifier section of the organ. Fasten with staples provided.

3. Mount the console connector chassis inside the organ within reach of the down tube (B, figure 1), organ pre-amplifier, and tremolo switch control cable. Use the cadmium plated screws provided.

4. Connect the tremolo control cord to the AC type wires from the console connector, using the wire nuts provided (A).

5. Locate the down tube (B) which is near the junction box. Remove its screw and locking clamp. Then slide the tube upward about 3 inches to make room for the extension chassis.

6. Remove the two side screws from the extension chassis. Now loosen the two top screws and slide the chassis end plate out of the chassis body.

7. Guide existing console wires through the slot in the extension chassis.

8. Drop a pull string through the down tube and tie it to the extension cable plug.

9. Pull extension cable up the tube and onto the tone generator support shelf (D). Insert the extension plug into its socket on the console connector (E).

10. Fit the down tube into its hole on the extension chassis and reassemble the chassis. Using the bronzed wood screws provided, mount the extension chassis on the bottom shelf (C).

11. Connect the blue and grey console connector wires to the 117-VAC terminals behind the protective cover on the organ pre-amplifier (F).

12. Connect the brown console connector wire to the GND terminal on the organ pre-amplifier (G).

13. Remove the red and black main speaker wires from the two G terminals on the organ pre-amplifier. Connect them to the two screw terminals on the console connector chassis (H).

14. Connect the red and black console connector wires to the respective vacated G terminals (I).

NOTE: Terminals in steps 11-14 may be solder-type terminals. If so, remove the spade lugs from the console connector wires and solder the wires to the proper terminals.

15. Plug the LESLIE speaker cable into its socket on the console connector extension chassis.

16. Adjust speaker volume according to the speaker back card or the LESLIE service manual. Installation is now complete.

Ordering Parts

Standard hardware, connectors, and electronic components should be purchased locally. Non-standard items may be obtained through a LESLIE speaker dealer. Orders should include part numbers as listed.

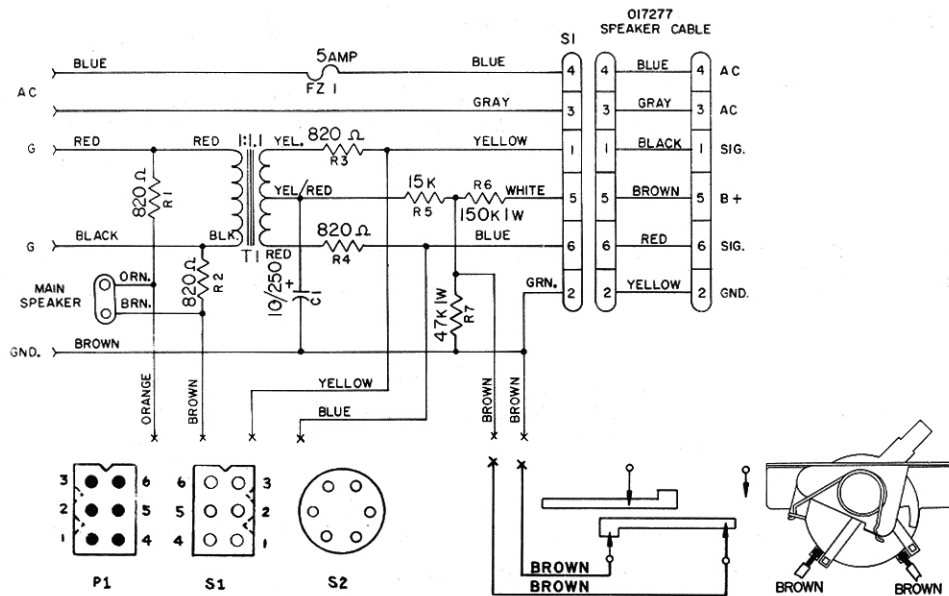


Figure 2.
Schematic, Console Connector 047357
with Control and Cable

PARTS LIST: 047357 CONSOLE CONNECTOR ASSEMBLY

Housing, socket, 6-circuit, white	042119
Fuse, 5-amp	029280
Fuse Holder	055178
Spade Lug, #8 (5)	010439
Transformer, isolation	048025
Grommet 013235 Screw, machine, 8 x 1/4, Phillips head (2)	025635
Screw, machine, 6-32 x 3/8 (2)	027979
Circuit Board Assembly	047506
Capacitor, 10 mfd, 250 V	018093
Resistor, 820 ohms, 1/2 W, 10% (R1, R2, R3, R4)	028373
Resistor, 15K, 1/2 W, 10% (R5)	048157
Resistor, 150K, 1 W, 10% (R6)	024117
Resistor, 47K, 1 W, 10% (R7)	018457
Circuit Board, etched	044180

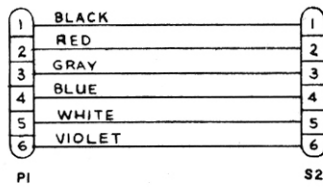


Figure 3.
Extension Cable 047365

PARTS LIST: TREMOLO CONTROL

Switch Case		Switch and Cable	028704
brown	012260	Assembly	
ebony	012278		
ivory	012286	Switch Retainer (2)	048744
Case Cover		Screw, thread cutting,	029140
brown	048702	6-32 x 3/8 (2)	
ebony	048710		
ivory	048728	Label (CHORALE/TREM)	103640
Switch Knob			
brown	048066		
ebony	048074		

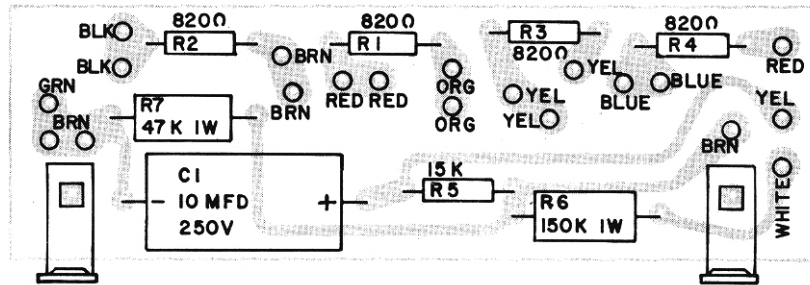


Figure 4. Circuit Board Assembly 047506

MULTIPLE SPEAKER INSTALLATION

For complete information see the service manual for the LESLIE speaker to be added.