

INSTALLATION INSTRUCTIONS FOR:

1. Model 215 Rotosonic Speaker System
 - A. In organs with built in Leslie Speaker System
 - B. In organs with stationary speaker system
2. Leslie 215 Control Center (141835)
3. Leslie 4 OHM Crossover Network (141726)
4. Control Center and 4 OHM Crossover Network

NOTE: THE LESLIE MODEL 215 SPEAKER IS FOR USE WITH SINGLE CHANNEL ORGANS WITH (OR WITHOUT) A BUILT-IN ROTOR AND SOME TWO CHANNEL ORGANS WITH SEPARATE FLUTE/TIBIA SPEAKERS.

There are two cords coming from the Model 215; a black power cord with AC plug attached and a thin brown 2 strand speaker cord. Enclosed with the Installation Instructions are 2 Scotchlok Connectors (141736) for making the hookup.

1A. INSTALLATION INSTRUCTIONS FOR CONNECTING MODEL 215 TO ORGAN WITH BUILT-IN ROTARY SPEAKER

CAUTION: DISCONNECT THE ORGAN POWER BEFORE PROCEEDING!

1. Remove the back of the organ. Run the speaker cord from the 215 cabinet through the power cord slot, hand hold, or any other opening on the organ back that is conveniently located near the speaker.
2. Locate the thin, twisted black and colored signal wires (usually red or orange) coming from the built-in Leslie Speaker (Fig. 1).
3. Cut the two signal wires coming from the built-in rotor speaker and connect each wire to one of the two-strand brown speaker wires (remove connector tabs) from the Model 215 using the Scotchlok Connectors (Figure 2) provided.
4. Check wiring, then replace the back of the organ making sure the cable is routed properly through the back.
5. Connect the organ power cord and cabinet AC cord to the wall outlet.

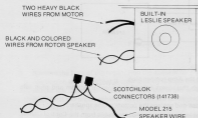
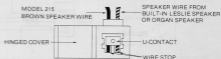


Fig. 1 Connection to single speed built-in Leslie Speaker



Insert the unstripped wires fully into the Scotchlok connector. Visually check that the wires are against the wire stop; crimp the U-contact down on the wires with a pliers and close the hinged cover.

Fig. 2 How to use scotchlok connectors

1B. INSTALLATION INSTRUCTIONS FOR CONNECTING MODEL 215 TO ORGAN WITH STATIONARY SPEAKER

CAUTION: DISCONNECT THE ORGAN POWER BEFORE PROCEEDING!

1. Remove the back of the organ. Run the speaker cord from the 215 cabinet through the power cord slot, hand hold, or any other opening on the organ back that is conveniently located near the speaker.
2. There are two wires connected to the organ speaker, black (ground) and colored (signal). Connect the Model 215 female connector tab to the organ speaker ground (black wire) terminal.
3. Disconnect the colored wire from the organ speaker and connect it to the male connector tab from the Model 215.

(CAUTION: To avoid shorting, wrap with insulating tape.)

NOTE: If the organ speaker wires are soldered, cut the wires and tabs and make connections using the Scotch Connectors (Figure 2) provided.

4. Check wiring, and replace the back of the organ making sure the cable is routed properly through the back.
5. Connect AC cord to the wall outlet.

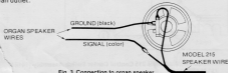
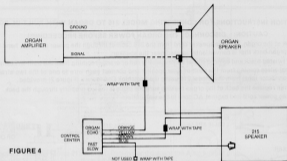


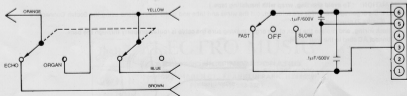
Fig. 3 Connection to organ speaker

KIT CONTENT

Switch Assembly, Organ/Echo,	
Fast, Off, Slow	141847
Clamp, cable	058255
Screw, SMA, 8 x 5/8 (1)	025627
Washer, FN, 8 x 1/2 (1)	015578

INSTALLATION**CAUTION: DISCONNECT THE ORGAN POWER BEFORE PROCEEDING!****FIGURE 4**

1. Detach the bottom from the Model 215 cabinet. Remove and discard the Amp jumper plug.
2. Run the cable with the Amp plug from the Control Center through the access hole in the speaker bottom and plug into the socket.
3. Fasten the cable to the inside of the speaker with cable clamp provided and replace the bottom on the speaker.
4. Remove the back of the organ. Run the speaker cord from the 215 cabinet and the 4 conductor cable from the Control Center through the power cord slot, hand hold, or any other opening on the organ back that is conveniently located near the speaker.
5. Disconnect signal (colored) wire from organ speaker and connect to the ORANGE wire from the Control Center.
[CAUTION: To avoid shorting, wrap with insulating tape.]
6. Connect the YELLOW wire from the Control Center to the organ speaker signal terminal.
7. Connect the BROWN wire from the Control Center to the (male) connector tab from the Model 215 speaker wire.
[CAUTION: To avoid shorting, wrap with insulating tape.]
8. Connect the (female) connector tab from the Model 215 speaker wire to the ground (black wire) terminal on the organ speaker.
NOTE: The BLUE wire from the Control Center is not used and should be wrapped with insulating tape to avoid shorting.
9. Loop the Model 215 speaker wire and Control Center cable through the cable clamp (Fig.5) and fasten where it will exit from inside the organ console.
10. Replace the back of the organ making sure the cable is routed properly through the back.
11. Connect the organ power cord and the cabinet AC cord to the wall outlet.

**Schematic, Leslie 215 Control Center Switch Assembly [141847]**

3. INSTALLATION INSTRUCTIONS FOR CONNECTING THE MODEL 215 WITH THE 4-OHM CROSSOVER NETWORK [141726]

KIT CONTENT

Crossover Network Assembly	141721
Two (2) 18-Inch Wire Leads,	
Red, signal	141830
Black, ground	141828
Screw, SMA, 8 x 1 (2)	020735

INSTALLATION

CAUTION: DISCONNECT ORGAN POWER BEFORE PROCEEDING!

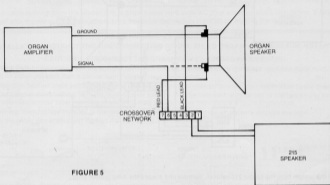
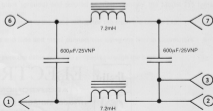


FIGURE 5

1. Remove the back of the organ. Run the speaker cord from the 215 cabinet through the power cord slot, hand hold, or any other opening on the organ that is conveniently located near the speaker.
2. Mount the Crossover Network inside the organ within reach of the organ speaker. Use the sheet metal screws provided. (NOTE: If the organ speaker terminals are solder-type, remove the connector tab from one end of the Wire Leads, supplied, and solder to the proper terminals.)
3. Disconnect the signal (colored) wire from the organ speaker and connect to Terminal #6 on the Crossover Network.
4. Connect the signal (red) Wire Lead to Terminal #7 on the Crossover Network and the signal terminal on the organ speaker.
5. Connect the (female) connector tab from the Model 215 speaker wire to Terminal #2 and the (male) connector tab to Terminal #1 on the Crossover Network.
6. Connect the ground (black) Wire Lead to Terminal #3 on the Crossover Network and the ground terminal on the organ speaker.
7. Make sure the Model 215 speaker wire is routed through the organ back properly. Loop the speaker wire through the cable clamp (Fig. 6) and fasten where it will exit from inside the organ console.
8. Replace the back of the organ making sure the cable is routed properly through the back.
9. Connect the organ power cord and the cabinet AC cord to the wall outlet.



[Figure 6] Cable Clamp



Schematic, 4-ohm Crossover Network
141721

4. INSTALLATION INSTRUCTIONS FOR CONNECTING THE MODEL 215 WITH THE CONTROL CENTER AND CROSSOVER NETWORK

CAUTION: DISCONNECT ORGAN POWER BEFORE PROCEEDING!

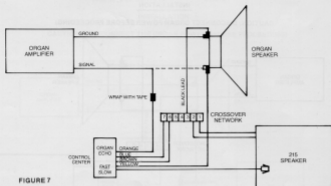


FIGURE 7

1. Detach the bottom from the Model 215 cabinet. Remove and discard the Amp jumper plug.
2. Run the cable with the Amp plug from the Control Center through the access hole in the speaker bottom and plug into the socket.
3. Fasten the cable to the inside of the speaker with cable clamp provided and replace the bottom on the speaker.
4. Remove the back of the organ. Run the speaker cord from the 215 cabinet and the 4 conductor cable from the Control Center through the power cord slot, hand hold, or any other opening on the organ back that is conveniently located near the speaker.
5. Mount the Crossover Network as stated in step 2 page 3.
6. Disconnect the signal (colored) wire from the organ speaker and connect to the ORANGE wire of the Control Center.
[CAUTION: To avoid shorting, wrap with insulating tape.]
7. Connect the YELLOW wire from the Control Center to the organ speaker signal terminal.
8. Connect the BLUE wire from the Control Center to Terminal #7 on the Crossover Network.
9. Connect the BROWN wire from the Control Center to Terminal #6 on the Crossover Network.
10. Connect the (male) connector tab from the Model 215 speaker wire to Terminal #1 and the (female) connector tab to Terminal #2 on the Crossover Network.
11. Connect the ground (black) Wire Lead to Terminal #3 on the Crossover Network and the ground terminal on the organ speaker.
12. Make sure the Model 215 speaker wire and Control Center cable are routed through the organ back properly. Loop the speaker wire and cable through the cable clamp (Fig. 6) and fasten where it will exit from inside the organ console.
13. Replace the back of the organ making sure the cable is routed properly through the back.
14. Connect the organ power cord and the cabinet AC cord to the wall outlet.



ELECTRO MUSIC
ACCUTRONICS INCORPORATED

11700 COPENHAGEN CT., FRANKLIN PARK, ILL. 60131
PHONE: (312) 283-3361