

# Leslie®

CONSOLE CONNECTOR KIT 6147

## INSTALLATION INSTRUCTIONS

FOR USE WITH: Leslie model 147 tone cabinet

All single channel self-contained organs  
(May be used on two channel organs with separate flute/tibia  
amplifier.)

### INTRODUCTION

This kit contains a console connector assembly and control center along with appropriate mounting hardware. When properly installed to the organ and connected to the Leslie speaker, it provides switching for Leslie Fast and Slow rotor speeds as well as switching between Leslie tone cabinet and self-contained organ speakers, or in Mix position allows both sound sources to be heard.

### KIT CONTENT

Console Connector & Cable Assembly 009-056271      Hardware Package 089-056275  
Control Center Assembly                                      008-056269      Installation Instructions 047-056273

**CAUTION:** Due to the presence of electrical potential and the danger of moving mechanical parts, installation procedures or adjustments requiring work inside the Leslie speaker cabinet or the organ console should be performed only by a service person authorized by the dealer or factory to perform such work.

### INSTALLATION

**CAUTION:** DISCONNECT ORGAN POWER BEFORE PROCEEDING.

#### CONTROL CENTER MOUNTING

1. Select a location under the keyboard shelf where the control is to be mounted, either left or right, as the organist prefers. Keep in mind that the cable from the control must pass into the interior of the organ. The mounting bracket may be reversed, if desired, by removing the four corner screws, turning it around, and re-fastening it to the plastic case with the four corner screws. This enables the control to be mounted to the front key strip if the keyboard shelf is metal, or the keyboard shelf if it is made of wood. See Figure 1 and Figure 2.
2. Select a hole to pass the control cable into the interior of the organ. If none is available, use a hole saw to make a 1" diameter hole or cut a notch in the rear of the organ shelf. Dress the control cable neatly under the keyboard shelf and secure it with the cable clamps provided.

#### CONSOLE CONNECTOR MOUNTING

Mount the console connector and cable assembly inside the organ within reach of the organ amplifier and speaker wiring using #8 x 1/2" sheet metal screws provided.

## CAUTION

SEE SAFETY NOTICE ON  
INSIDE COVER SHEET

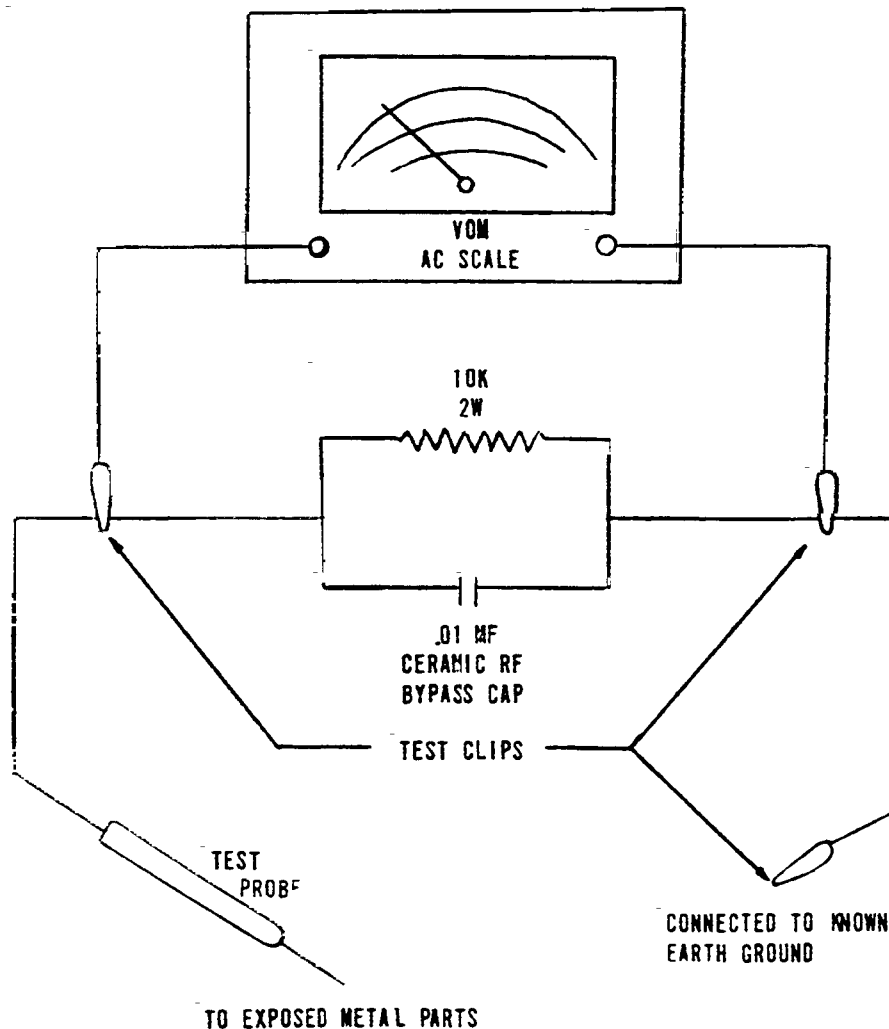
047-056273

## SAFETY NOTICE

Great care has been taken in the design and manufacture of this product to assure that no shock hazard exists on any exposed metal parts. Internal service operations can expose the technician to hazardous line voltages and accidentally cause these voltages to appear on exposed metal parts during repair or reassembly of product components. To prevent this, work on these products should only be performed by those who are thoroughly familiar with the precautions necessary when working on this type of equipment.

To protect the user, it is required that all enclosure parts and safety interlocks be restored to their original condition and the following tests be performed before returning the product to the owner after any service operation.

Plug the AC line cord directly into a line voltage AC receptacle (do not use an isolation transformer for this test) and turn the product on. Connect the network (as shown below) in series with all exposed metal parts and a known earth ground such as a water pipe or conduit. Use an AC VOM of 5,000 ohms per volt or higher sensitivity to measure the voltage drop across the network. Move the network connection to each exposed metal part (metal chassis, screw heads, knobs and control shafts, escutcheon, etc.) and measure the voltage drop across the network. Reverse the line plug and repeat the measurements. Any reading of 4 volts RMS or more is excessive and indicates a potential shock hazard which must be corrected before returning the product to the user.



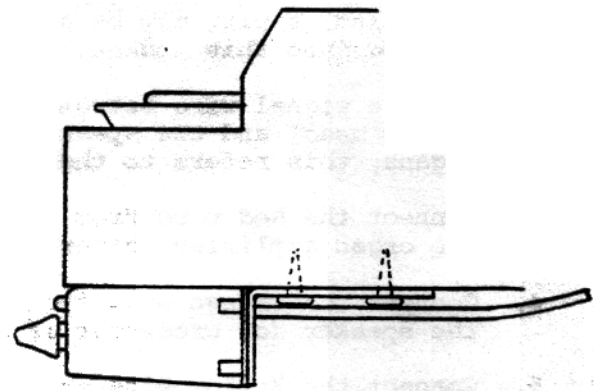
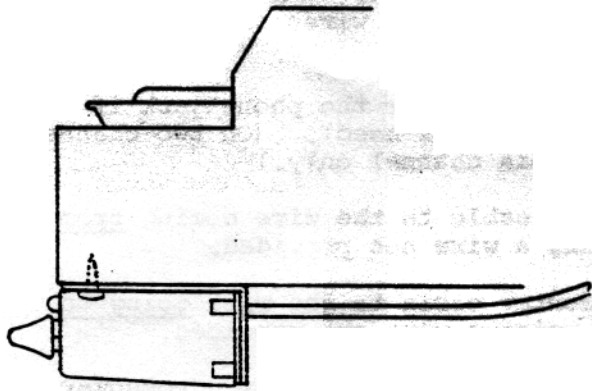


Figure 1

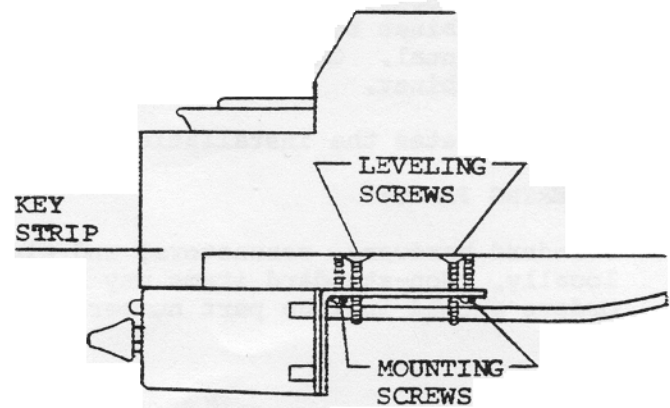
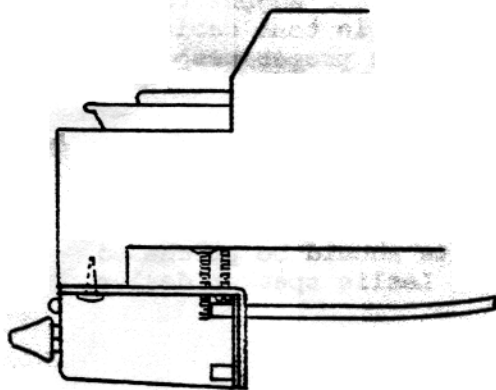


Figure 2

Four sets of mounting screws of different lengths to accommodate different key strip heights are included in the hardware package.

## WIRING

1. Locate the 117V AC wires AFTER the organ power On/Off switch. Connect the Gray wire from the console cable to one of these wires and the heavy Blue wire from the console cable to the other wire. The input terminals of the power transformer may be used if desired. If the organ has a switched AC socket, a plug may be attached to the Gray and Blue wires and conveniently plugged into this socket.
2. Cut the signal wire between the organ amplifier (after the phone jack if one is used) and the speaker (or crossover if one is used). (On two-channel organs, this refers to the separate Flute/Tibia channel only.)
3. Connect the Red wire from the control center cable to the wire coming from the organ amplifier (after phone jack) using a wire nut provided.
4. Connect the Orange wire from the control center cable to the wire going to the speaker (or crossover if one is used) using a wire nut provided.
5. Connect the Yellow wire from the console cable to the amplifier, crossover, or speaker ground. Do not remove existing ground wire.
6. Connect the Green wire from the console cable to the Green wire from the control center using a wire nut provided.
7. Connect the Brown wire from the console cable to the Brown wire from the control center using a wire nut provided.
8. Connect the remaining Blue wire from the console cable to the Blue wire from the control center using a wire nut provided.

## FINAL CHECK

Check all connections for proper hookup. Dress wires neatly and secure with cable clamps and/or cable ties. Connect Leslie speaker cable to console connector socket and to tone cabinet. Turn on organ power and adjust volume of tone cabinet to desired level according to instructions in tone cabinet owner's manual. Check that control center switches provide proper response in tone cabinet.

This completes the installation.

### ORDERING PARTS:

Standard hardware, connectors, and electronic components should be purchased locally. Non-standard items may be obtained through a Leslie speaker dealer. Orders should include part numbers listed.

## PARTS LIST

### CONSOLE CONNECTOR AND CABLE ASSEMBLY 009-056271

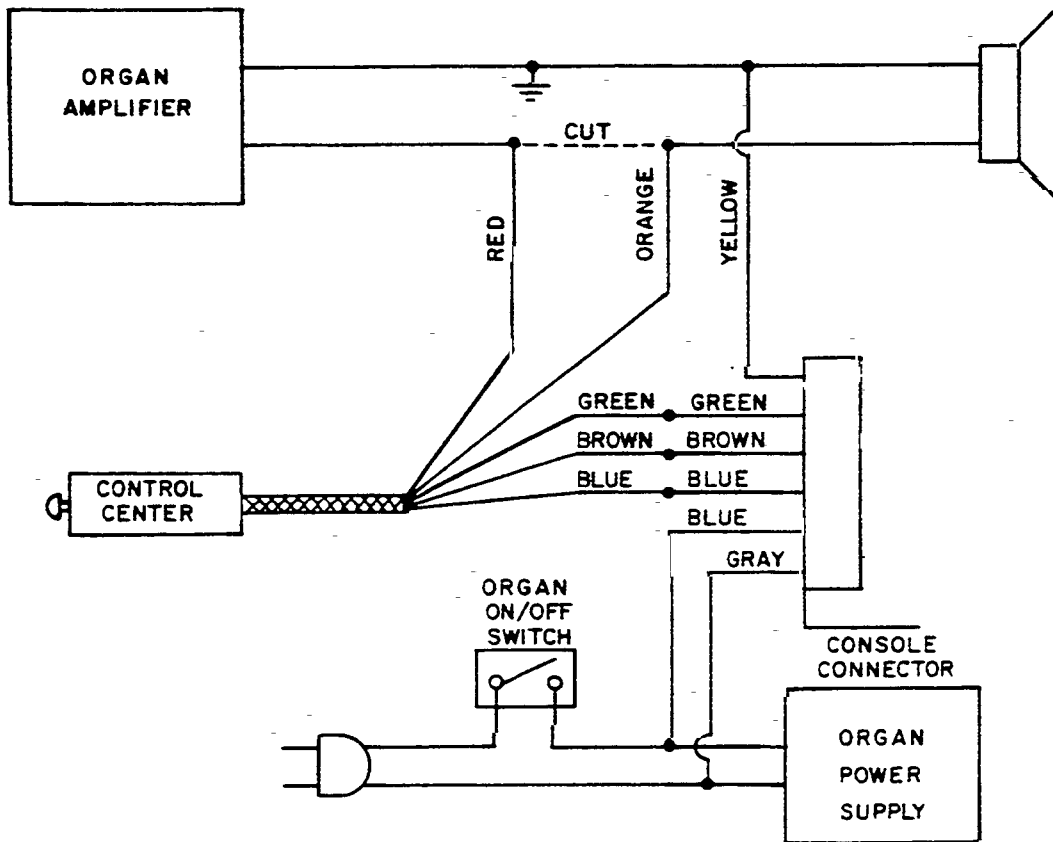
Chassis	035-057339
6-Pin Socket	504-030775

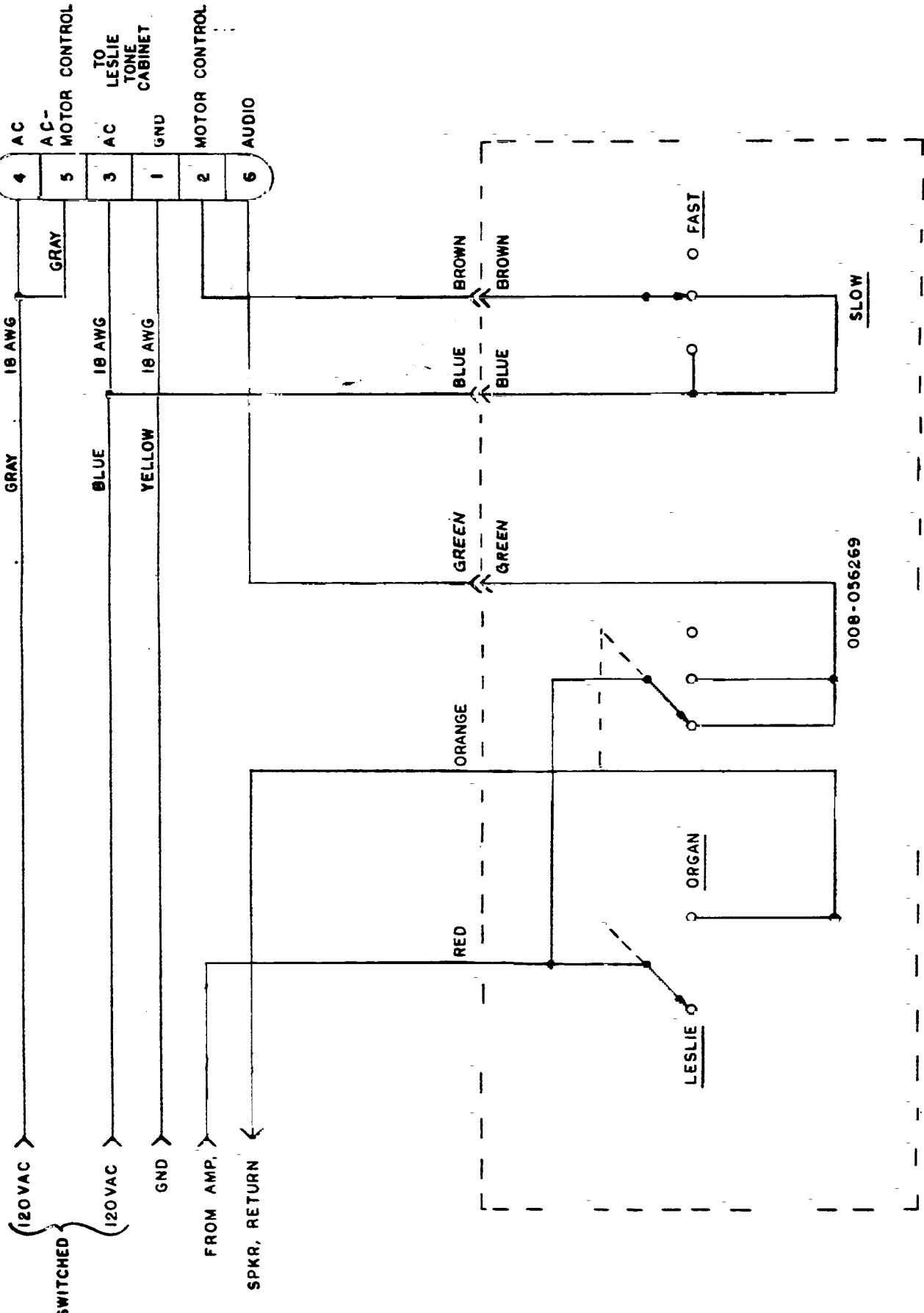
### CONTROL CENTER ASSEMBLY 008-056269

Cable Mounting Plate	035-057338
Angle Bracket Mounting Plate	035-057324
Case - Silk Screened	541-141114-001
Knob - White	531-137291
Switch - Lever - 3 Position	508-137304

047-056273

# SINGLE CHANNEL ORGANS





Schematic, Console Connector & Cable Assembly with Control Center